



STATE OF NORTH CAROLINA  
DEPARTMENT OF TRANSPORTATION

BEVERLY EAVES PERDUE  
GOVERNOR

EUGENE A. CONTI, JR.  
SECRETARY

March 11, 2010

NCDOT Contracted GeoEnvironmental Firms

Re: **Standard Figure Requirements**

Dear Firm:

In an effort to consistently obtain figures with the level of detail required for our purposes, we have developed a list of items that will be required on all figures from this point forward. Exceptions will be made for projects that do not have design files available and on a case by case basis to be discussed with the project manager prior to submitting a report. Figures that do not meet the minimum requirements will be returned for corrections and these corrections will be reflected in the final project evaluation score. Sample base map figures are enclosed for your reference.

Reference Files

The attached table lists the required design files that should be referenced to your figures. While the design files are required, every level within the file does not need to be displayed. For example, the "dsn" file is required but the level displaying the super elevation can be turned off.

Color or Gray Scale

You will note that one of the enclosed sample figures is color and the other is gray scale. Both are acceptable, and it is up to the Firm to decide how to present the data. However, if you use color, you must map the yellow design elements to black in the Pen Table before you plot.

Symbology

If your plots have what appear to be random letters instead of a design feature, such as a string of Ps where a tree line should be, you are not using the symbology defined in the NCDOT Workspace. The NCDOT Workspace and other useful CADD information can be found on our CADD Services web page: <http://www.ncdot.org/doh/CADD/>.

If you have any questions about this policy or need help implementing it please let me know.

Sincerely,

A handwritten signature in blue ink, appearing to read "C. Parker".

Cyrus F. Parker, LG, PE  
GeoEnvironmental Supervisor  
Geotechnical Engineering Unit

Enclosure

cc:  
GeoEnvironmental Section Project Managers  
Mohammed Mulla, PE, Assistant State Geotechnical Engineer

**MAILING ADDRESS:**  
NC DEPARTMENT OF TRANSPORTATION  
GEOTECHNICAL ENGINEERING UNIT  
GEOENVIRONMENTAL SECTION  
1589 MAIL SERVICE CENTER  
RALEIGH NC 27699-1589

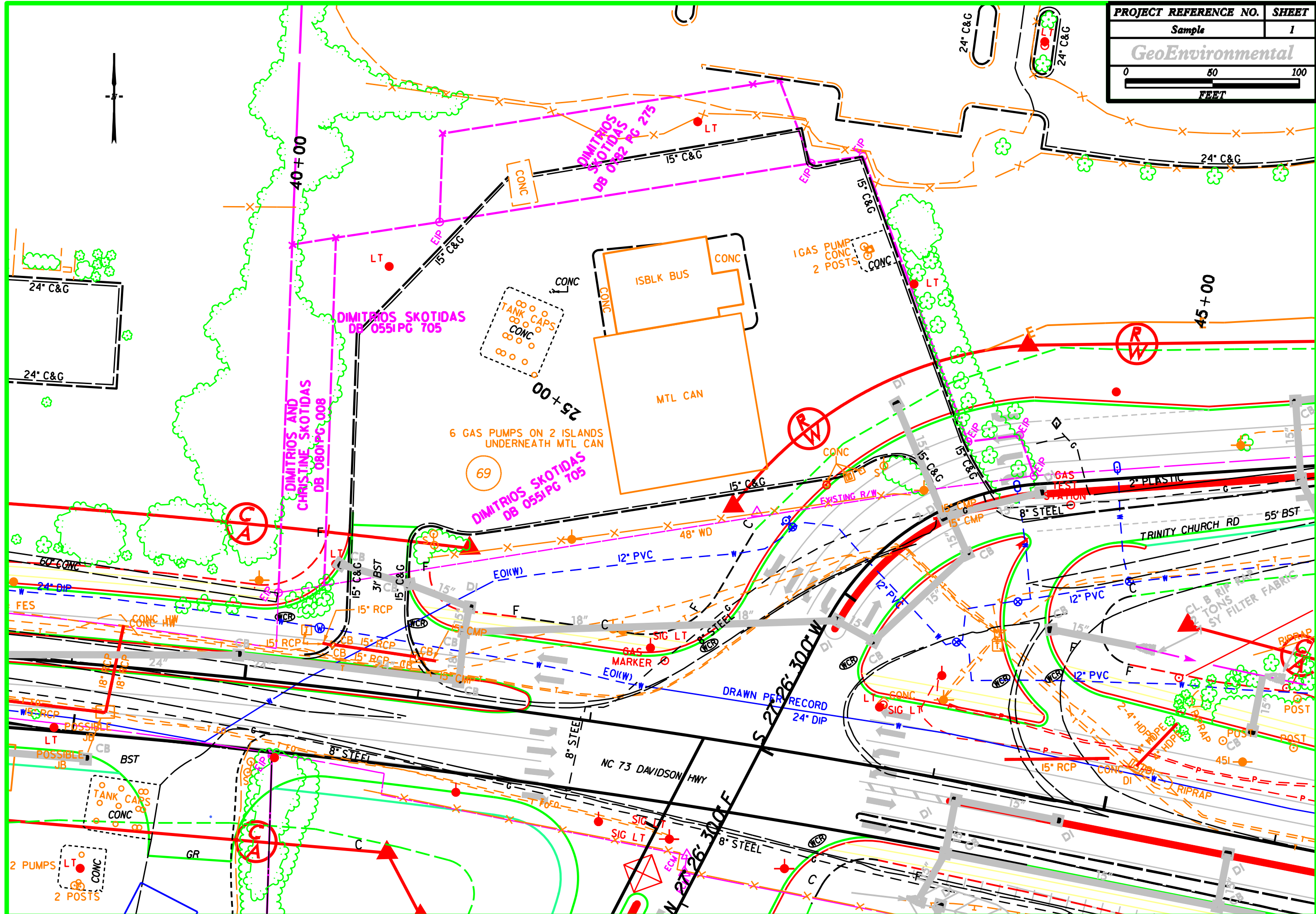
TELEPHONE: 919-250-4088  
FAX: 919-250-4237  
[www.ncdot.gov](http://www.ncdot.gov)

**LOCATION:**  
CENTURY CENTER COMPLEX  
BUILDING B  
1020 BIRCH RIDGE DRIVE  
RALEIGH NC 27610

## Required Reference Files for NCDOT Projects

File	Description	Typical File Name
<b>PLN</b>	<b>Existing Planimetrics such as buildings, roads and vegetation</b>	<b>TIP_LS_PLN.DGN</b>
<b>PRL</b>	<b>Existing property boundaries and existing right of way</b>	<b>TIP_LS_PRL.DGN</b>
<b>SUE</b>	<b>Existing subsurface utilities such as phone, fiber, power</b>	<b>TIP_LS_SUE.DGN</b>
<b>HYL</b>	<b>Existing drainage</b>	<b>TIP_LS_HYL.DGN</b>
<b>ROW</b>	<b>Proposed right of way</b>	<b>TIP_RDY_ROW.DGN</b>
<b>DRN</b>	<b>Proposed drainage</b>	<b>TIP_HYD_DRN.DGN</b>
<b>SS</b>	<b>Proposed slope stake such as limits of cut and fill slopes</b>	<b>TIP_RDY_SS.DGN</b>
<b>DSN</b>	<b>Proposed design such as alignment, new edge of pavement and medians</b>	<b>TIP_RDY_DSN.DGN</b>

PROJECT REFERENCE NO.	SHEET
Sample	1
<i>GeoEnvironmental</i>	



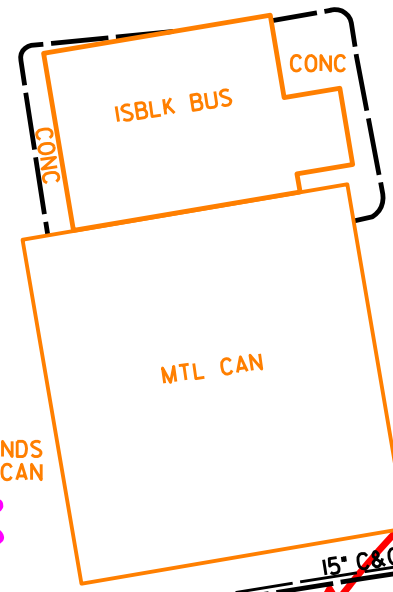
40+00

25+00

45+00

DIMITRIOS AND CHRISTINE SKOTIDAS DB 0801PG 008

DIMITRIOS SKOTIDAS DB 0551PG 705



6 GAS PUMPS ON 2 ISLANDS UNDERNEATH MTL CAN

69

NC 73 DAVIDSON HWY

TRINITY CHURCH RD

S 2726' 300' W

N 2726' 300' E

